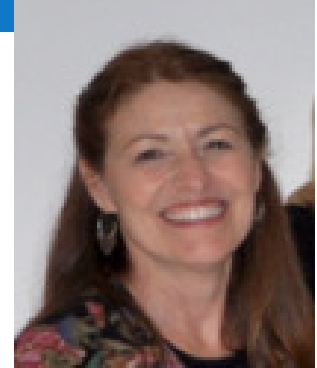


Tuesday, 01 November 2011 | [view it in your browser](#)

## President's Message

### Which Comes First?



I'm not talking about the Chicken or the Egg..... I'm talking about what we need and use most often that contributes to our success as effective Project Managers. Is it Communication or Relationships? One builds and promotes both throughout a Project Manager's various projects, careers and lives! I focus on building relationships – and that includes identification of all my "internal and external" customers, peers, employees, subcontractors and of course stakeholders that are associated with my projects.

But to do that, to build productive relationships, we must be skilled communicators. And that also means being skilled at several different methods of communication and knowing when to use what! You've heard the old saying, "If he's a listener, I'm going to speak to him; if he's a reader, I'm going to write". The bottom line - I have to deliver my message. And continue to build and maintain a professional relationship in the process.

I was inspired to write about effective communicating this month by Nishu Varma. She was our speaker at the October Dinner Meeting on Oct 25th, and her subject was Communication - the Lifeblood of Project Management. This is a passion for Nishu, and I as well as many others share this passion with her. It was a great presentation – and fun too, as she broke us into teams and gave us a "communication assignment". It was a good lesson in reviewing something we all know: Effective communication for a successful project includes a clear understanding of the objectives of our stakeholders and continuously communicating across the entire team.

And Tracy Sharp reminded me this week of one of her take-aways from a session she attended during last year's PMI Leadership Institute Meeting (LIM):

Communication IS your deliverable; until your deliverable.

I depend upon the Basic Principles of Zenger-Miller's Frontline Leadership Program, taught to me early in my career as a developing leader. I have these laminated and hanging on my office wall. They are the principles – the communication skills – I strive to utilize in developing productive relationships every day.

- Focus on the situation, issue or behavior, not on the person
- Maintain the self-confidence and self-esteem of others
- Maintain constructive relationships with your employees, peers and managers
- Take the initiative to make things better
- Lead by example!

And speaking of building relationships and communicating (or communicating and building relationships), John Sheltren and I attended this year's LIM in October. There was plenty of both going on! We are compiling our notes and will be communicating our significant take-aways very soon.

See you at the holiday party on November 29th!

Carmen Jones  
PMI-NNV President

# 2011 PMI-NNV Holiday Party

**Tuesday, November 29th 6:00-8:30 PM**

**Register now** for a night to remember! Although there will not be a presentation this evening, we will have plenty of time for networking, fun, food and prizes. Be sure to reserve your spot and mark your calendar to attend so that you have a chance at winning the many wonderful raffle prizes.

Bring a guest to the party who has never attended a PMI-NNV event in the past and you will receive five extra raffle tickets.

**White Elephant Gift Exchange** - To join in on the fun; please plan to bring a wrapped gift valued at \$10. You do not want to miss this event!

Please forward this to your friends and colleagues who might be interested in getting involved in the chapter!

## **Dinner:**

Register soon so we can get an accurate count and be sure to include your entrée selection. Also, if you are bringing a guest or have any special dietary needs, please let us know.

Entrée Selection (To be pre-selected at time of Registration)

- **Top Choice Sirloin:** A juicy 8 oz Sirloin smothered in Mushroom Gravy, served with Whipped Potatoes and Seasonal Vegetables.
- **Jameson Salmon:** Grilled Salmon with Jameson glaze, Basmati Rice and Seasonal Vegetables.
- **Chicken Marsala:** Medallions of Chicken cooked in a red Wine and Mushroom Sauce, accompanied with Whipped Potatoes and Seasonal Vegetables.
- **Veggie Stir Fry:** Garden Vegetables sautéed in Sesame Oil with our Homemade Ginger Teriyaki Sauce on a bed of Basmati Rice.

## **Beverages:**

TEK Systems is generously providing Two Cocktails for each attendee this evening. You will receive two drink tickets when you check in at the registration table.

## **Cost**

NNV Member \$35 (chapter members must log in to get discount)

NNV Guest \$35

Non-Member \$40

Non-Member Guest \$40

## **Sponsorships / Gift Donations:**

Please contact [Linda Kennedy](#) if your company would like to sponsor a prize (big or small).

# Dinner and Lunch Meetings

Due to the Holiday season upon us, we will not be having regularly scheduled meetings with speakers for November and December. As a teaser though, for all you Wolf Pack fans out there, we will be joined in January 2012 by UNR basketball coach David Carter. He will be speaking on how to motivate a team.

So please make sure you are able to join us in January for the meetings and please see information above as to how to register for the Holiday Party in late November.

## Name Badges for all PMI-NNV Chapter Members

We are excited to announce that we will be issuing Name Badges with magnetic backings for all of our PMI-NNV members to wear to our meetings. The new badges will be distributed at our Holiday Party and our January Dinner Meeting. Each member will receive one badge; if it is lost it can be replaced for a small fee through the chapter on a quarterly basis. If you attend a meeting in the future and forget to bring your new badge, we will have our blank standby paper/sticky badges which you can write your name on for the meeting.

We are excited to get these to our members and look forward to seeing them happily used at our upcoming events!

## PMI Network Documents Project Management Success

November's edition of PMI Network documents how learning and applying project management best practices lowers costs, reduces time, and helps achieve important objectives like sustainability and customer satisfaction. Most of the infrastructure for the 2012 Olympic Games in London has been completed ahead of schedule and the project is on track to finish 2 billion pounds under budget.

[http://www.pmnetwork-digital.com/pmnetworkopen/201111?sub\\_id=j49yy7oGft9G#pg15](http://www.pmnetwork-digital.com/pmnetworkopen/201111?sub_id=j49yy7oGft9G#pg15)

Chapter member Wynnlee Crisp was one of the four-member team that developed prime contractor CH2M HILL's enterprise-wide project delivery system and conducted project management training for the international company.

Our Sponsors:

